



Australian Distributor

Cinetech Australia

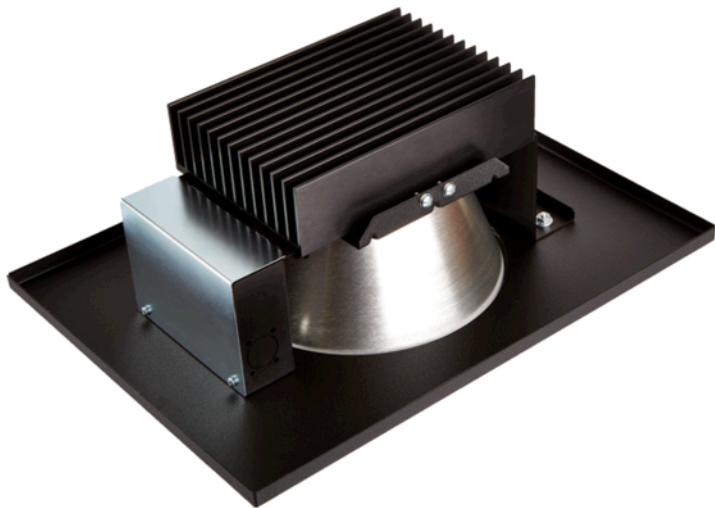
Tel. 0479 095 202

E-mail sales@cinetech.com.au

Web. www.cinetech.com.au



Dual Cleaning/House LED Light Fixture



Say goodbye to Auditorium Cleaners Lights!

Cinetech Australia is pleased to introduce a dual LED 8" downlight specifically designed for auditoriums. The unit includes two sets of LED elements that can be controlled independently. One channel can be a warm color temperature for patron lighting with the other producing 'ultra cool' high lumen output for cleaning applications.

This offers several cinema design enhancements and cost savings for the exhibitor. Having the ability to utilize all light fixtures in cleaning mode offers greater coverage and the ability to automate cleaning lights through digital cinema automation.

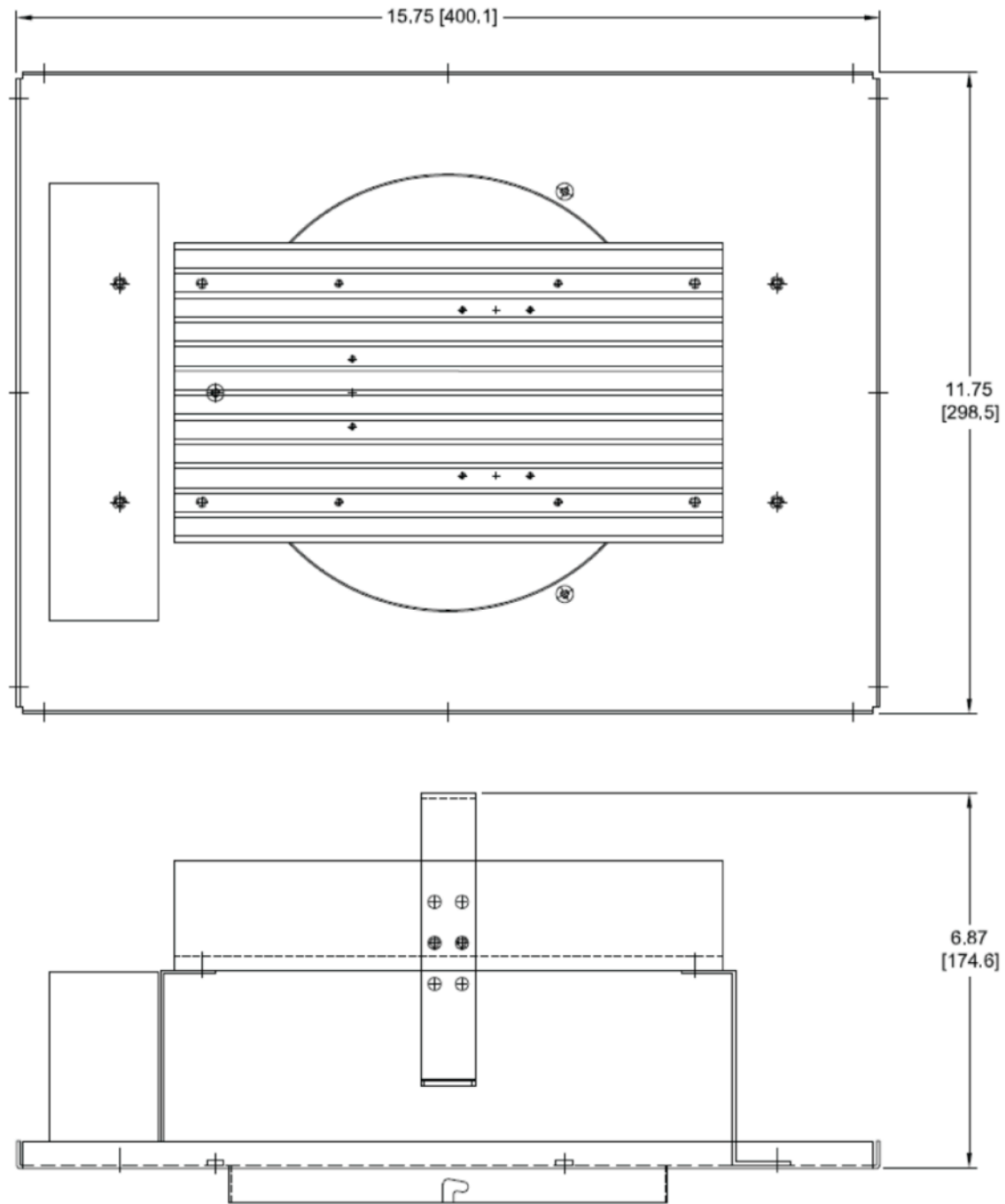
Furthermore, this system eliminates the need to install additional cleaning lighting electrical cable and fittings for new cinema builds. All lighting fixtures are simple daisy chained with control cables back to the master auditorium dimmer (Sold Separately).

The unit offers an incredibly smooth 1000:1 dimming ratio that provides gentle transitions between lighting levels.

The fixture is available in a 70 and 90 Watt model with six different color temperature configurations with a range from 2700k to 5000k.

- 70 Watt model: Center: 1600 Lumens; Outer: 4800 Lumens. 6000 total Lumens
- 90 Watt model: Center: 3000 Lumens; Outer: 4800 Lumens. 8000 total Lumens
- 1000:1 dimming: Dims smoothly from 100% to less than 0.1% light output
- 1.0-10Vdc dimming control input per IEC 60929 architectural dimming standard
- Color temperatures 3000K-4000K standard, others on request
- Optional "Dim-warm" feature mimics incandescent lamps
- Oversized heatsink for long component life: 50,000 hours typical
- Power supply can be located in the booth
- Fixtures may be daisy-chained (up to 4)
- Includes 24" T-bar mounting hardware (2 brackets)

Dimensions & Outline



Configurations/Models

- ALF Downlight Fixture, model 70W3030 (3000K/3000K)
- ALF Downlight Fixture, model 70W2735 (2700K/3500K “Dim-warm™”)
- ALF Downlight Fixture, model 90W3030 (3000K/3000K)
- ALF Downlight Fixture, model 90W2735 (2700K/3500K “Dim-warm™”)
- ALF Downlight Fixture, model 90W2750 (2700K/5000K “Earthlite™”)
- ALF Downlight Fixture, model 90W3040 (3000K/4000K cleaning)

Please visit www.cinetech.com.au/dllf.html for video demonstration.